

C I S CAPITAL DEVELOPMENT GROUP NEWS

Completed works in the CAPITAL DEVELOPMENT PROGRAM

Inside this edition

Other campus works and works in progress in the Capital Development Program

Dubbo

School of Rural Health Student Accommodation

Mallett Street - BMRI, Substation Upgrade

Sydney University Village Learning Solutions

Camden

Radiation Labs

Scintigraphy Imaging Facility

CAMPUS INFRASTRUCTURE SERVICES CAPITAL DEVELOPMENT

Services Building - G12
353 Abercrombie Street,
Darlington Campus, NSW
2006

[Visit our website](#)

Feedback/inquiries:
rosie.biasi@usyd.edu.au

The Capital Development Group within CIS provides project management services and environmental expertise to deliver quality infrastructure, refurbishment and new building projects in support of the University's strategic plan

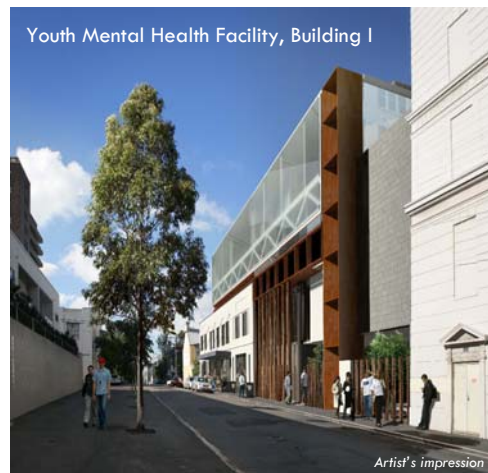
Mallett Street Campus

Brain Mind Research Institute (BMRI)

Ken Parker Brain Research Laboratories (Building F) is due to open in December, while the Youth Mental Health Facility (Building I) is scheduled for completion in 2009. The four-storey complex will complement existing basic science, clinical and translational facilities of the BMRI and allow expansion of the current clinical services to focus on enhanced care of young people suffering mental health conditions. The clinical space will also provide facilities and assistance to promote return to education, employment and developing life skills.

The Ken Parker Brain Research Laboratories will focus work on a number of key brain disease processes that result in disability and cognitive impairment, such as migraine headache and vascular diseases of the brain.

KEN PARKER BRAIN RESEARCH LABORATORIES WELCOMES EXPANSION OF RESEARCH PROGRAM



Youth Mental Health Facility, Building I

Artist's impression

DUBBO Campus

School of Rural Health Student Accommodation and Student Centre



Building phase 1 incorporates new on-campus student residential accommodation and recreational facilities for the School of Rural Health in Dubbo.

The building, with shared facilities, accommodates 10 extra students from the University of Sydney Medical Program and is scheduled for completion in October.

The SRH delivers the full University of Sydney Medical Program (USydMP) for Stages 3 and 4, including pre-internship terms - as delivered at the metropolitan campus, teaching hospitals and clinical schools. Its aim is to provide students with a rewarding rural experience so that they might consider a rural career following graduation.



CAMDEN Campus

Radiation Lab upgrade for Vet Science

The completed Radiation Lab in the Shute Building at Camden for the Faculty of Veterinary Science, is an OHSIM initiative to bring all radiation labs at the Camperdown and Camden campuses up to current safety standards.



Scintigraphy Imaging Facility

This new facility for the University Veterinary Teaching Hospital houses sophisticated imaging equipment used primarily as a diagnostic tool for the treatment of large animals, particularly horses.

It includes a prep room, imaging room with state-of-the-art digital imaging equipment, holding stables and various support rooms. This facility complements the hospital's other new equipment including a standing MRI scanner, a high speed treadmill, and two digital ultrasound machines.

The building also includes two new pump rooms that reticulate water around the campus for both regular use and fire-fighting purposes.



Scintigraphy Imaging Centre



Holding stables



Digital Imaging Scanner



Digital imaging scanner

Next edition: New Law School Building Update

Mallett Street Campus Electrical Substation Upgrade



Due to the current and future upgrade of the Mallett Street Campus and in particular the expansion of the Brain and Mind Research Institute, increased requirements on electrical supply necessitated the need for an upgrade of the electrical supply for the entire site.

Sydney University Village Learning Solutions



Photo: Kylie Hilton

Needing to vacate level 4 of the Margaret Telfer building, which is to undergo significant refurbishment, a new home with modern facilities was required for Learning Solutions. Level 1 of the Bligh building located in the Sydney University Village on Carillon Avenue was the ideal location.

A complete fitout comprising 700sqm of training rooms, breakout area, meeting rooms and office accommodation was accomplished in 12 weeks and meets all of Learning Solutions current and future requirements. They are due to move in on September 29.

Learning Solutions, the University's staff development and training unit, offers a number of learning options including coaching and tailored workshops to support managers and teams in developing skills.



Photo: Kylie Hilton