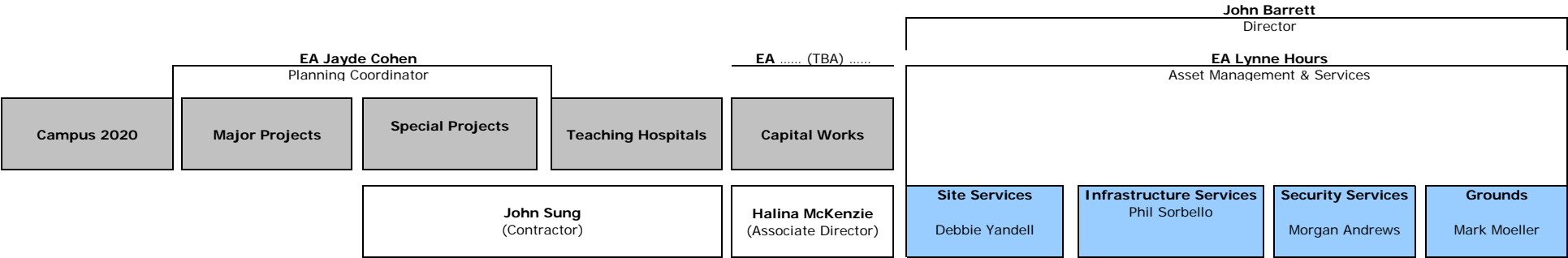


CIS Structure - evolving



| | | | | | | | | |
|---|---|--------------------|--|---------------------------------|--|---|-------------------------|------------|
| 2020 Masterplanning; Consultation Masterplan Design Cost Estimate Senate Endorsement Traffic Strategy Parking Strategy Student Housing Other Campuses; ATP (Agriculture) Camperdown Campus Camden Campus Phillip St Big | ACSE Abercrombie Precinct MNP Nth Eveleigh | CODCD(Sydney ARC) | RNSH (Kolling) Westmead Nepean | IPPs Client Faculties | Cleaning Mail Service Precinct Officers | Building Services Building Fabric Building Condition Audit | Security Review SEMP | Tree Audit |
|---|---|--------------------|--|---------------------------------|--|---|-------------------------|------------|

RESOURCES

Heritage (Chris Legge-Wilkonson)
 Sustainability (John Laverak)
 Communications (Jo Lumby)
 CAD (Allan Martin)

Possible future ;
 Design Guidelines / Quality Control
OH&S
 Planning
 Space Planning
 Landscape

Finance and Systems

David McVicar
 Director

 Budget
 Expenditure Program
 Staff & Salaries

 Financial Control
 Financial Reporting

 Governance

 BAS